



12075 N. Corporate Parkway, Suite 200
 Mequon, WI 53092
 Ph: 262-241-4466
 Fax: 262-241-4901

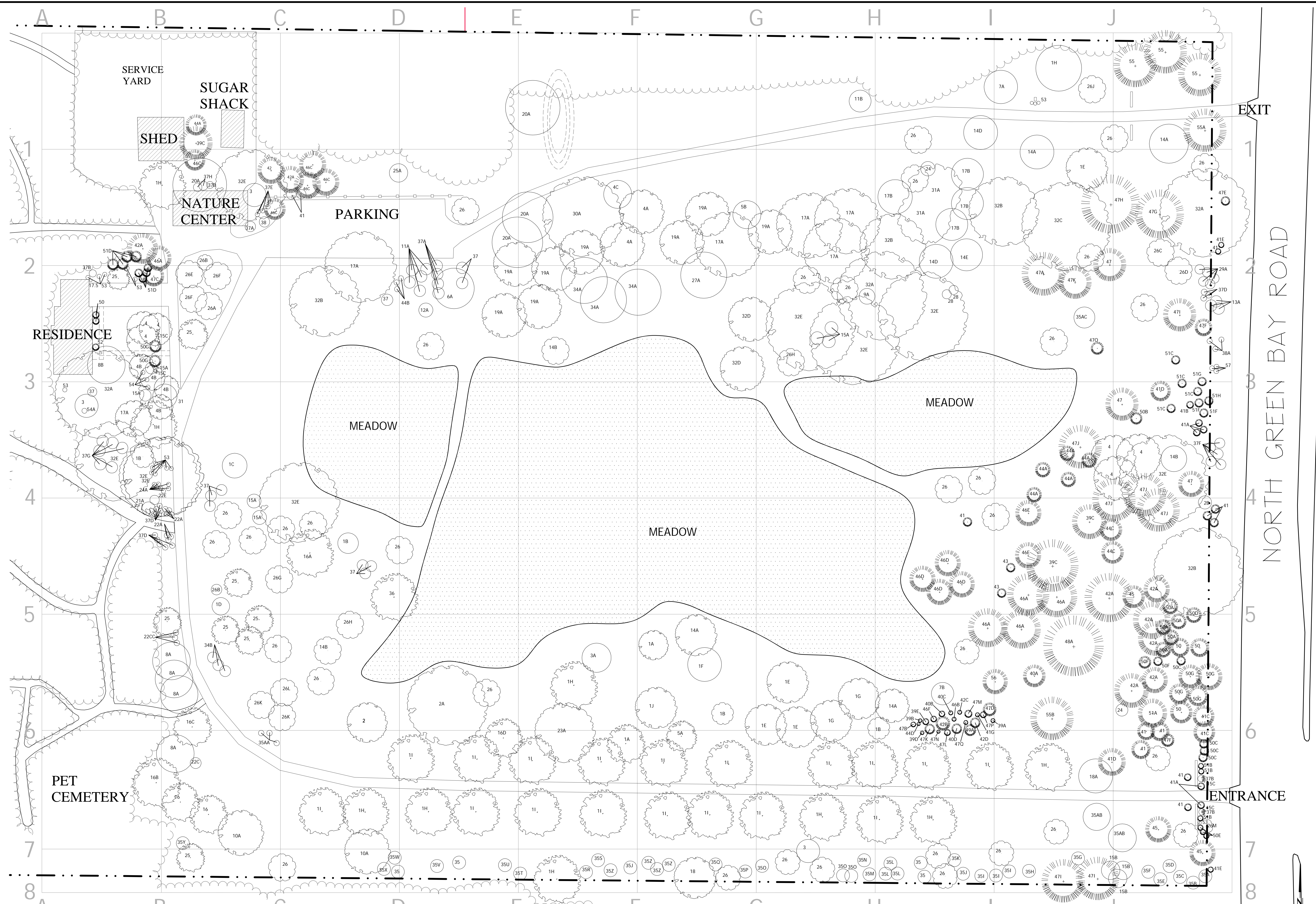
www.stantec.com
 © STANTEC 2011

ARBORETUM MAP
 HAWTHORN HOLLOW NATURE SANCTUARY & ARBORETUM
 880 GREEN BAY ROAD
 KENOSHA, WISCONSIN

NO.	REVISION	DATE

SURVEY	###
DRAWN	AJR
DESIGNED	GAR
APPROVED	GAR
PROJ. NO.	193802327

SHEET NUMBER
A1.01



HAWTHORN HOLLOW NATURE SANCTUARY & ARBORETUM



MARY FROST ASHLEY CHARITABLE TRUST



V:\193802327\CAD\DWG\193802327A1.DWG 10/24/2013 1:53:24 PM